



KEY FEATURES

LONG-LIFE AMMONIA SENSOR

Based on the Honeywell 4NH3-LL sensor, it is designed for stable NH₃ background conditions without signal drift and offers a long lifespan in air, exceeding two years.

ANALOGUE OUTPUT

The device provides an analogue output 4-20mA or 0-10V, depending on the version, for interface with external controller.

EASY INSTALLATION

The device is compact and lightweight, ensuring an extremely simple installation process.

COMPENSATED

Equipped with built-in temperature sensors the signal is automatically compensated to ensure maximum accuracy.

COMPETITIVE PRICE

It offers the most cost-effective solution on the market, combining low unit price with minimal installation and management costs

PRODUCT APPLICATIONS

- ☐ Environmental monitoring in livestock and agriculture
- ☐ Ventilation systems and air quality control
- ☐ Chemical and manufacturing industries
- ☐ Waste storage and treatment facilities

DESCRIPTION

The AGRI-C-NH3 transmitter is designed to monitor consistent ammonia (NH₃) levels using the advanced Honeywell 4NH3-LL sensor, maintaining performance without degradation. The sensor operates effectively in a wide range of environmental conditions, providing stable and accurate readings. The device has a temperature compensation feature for a more precise sensor reading. The 4NH3-LL sensor can continuously function with background ammonia levels, offering durability and low maintenance for long-term use. The device communicates with the 4-20mA standard or 0-10V, depending on the version, ensuring a wide range of compatibility with existing systems and offering an easy-installation with less cables.

TECHNICAL SPECIFICATIONS

NH₃ Sensor

measurement technology	3 - electrode Electrochemical
measurement range	0 - 100 ppm
resolution	<1 ppm
sensor life expectancy	2 years in fresh air sensor capacity > 300k ppm/hr (1 year of continuous exposure to 30 ppm NH ₃)
temperature range	continuous: -20°C to 40°C intermittent: -40°C to 50°C

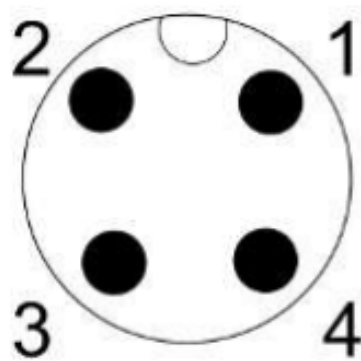
Electrical characteristics

operating voltage	from 20V to 28V
consumption	max 20 mA (4-20mA version) 5mA (0-10V version)
max supply ripple	200mV
protection	reverse connection and overvoltage protection
IP classification	IP65
housing	wire connection

Special Function

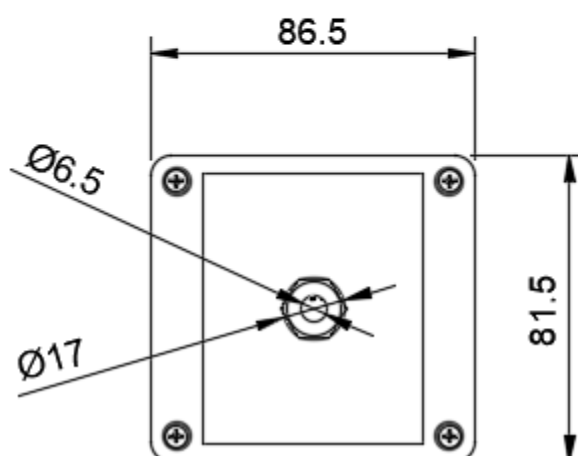
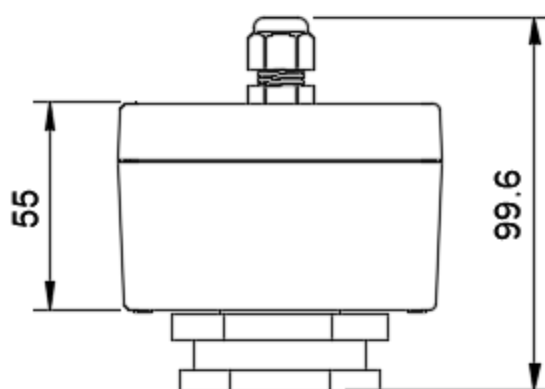
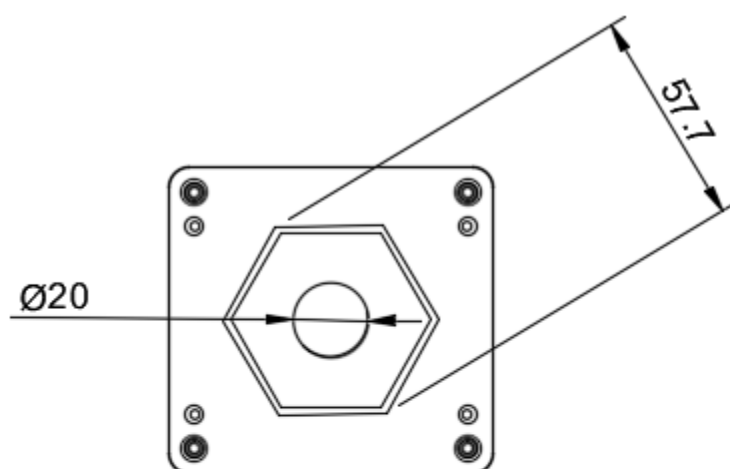
LED indicator for Sensor life state
algorithm to compensate long term drift

PINOUT



PIN	4-20 mA	0-10 V
1	power 24 Vdc	power 24 Vdc
2	N/A	0-10 V
3	N/A	GND
4	4-20 mA	N/A

DIMENSIONS



checkup

OBJECTS WITH LIFE INSIDE